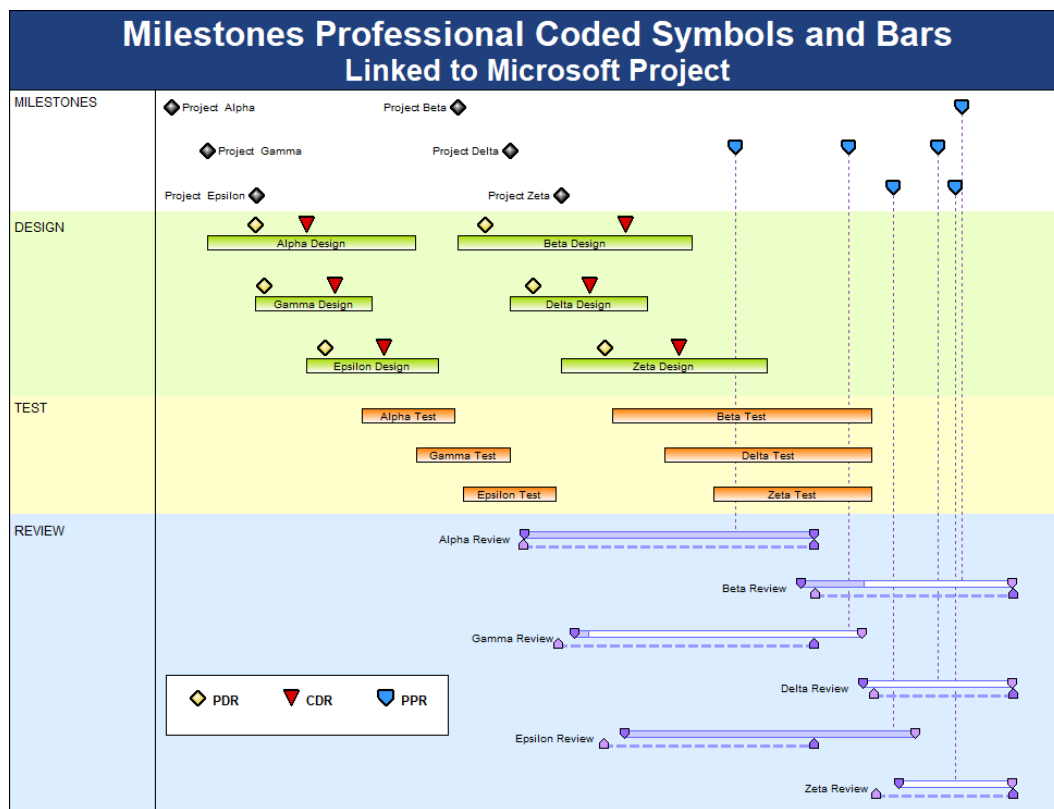


# Create Presentation Reports for Microsoft Project

## Your guide to Milestones Professional's Interface with Microsoft Project

Milestones Professional offers a direct interface to Microsoft Project, making it easy to generate presentation report formats beyond the standard formats offered by Microsoft Project. Build a schedule using one of Milestones many built-in templates or build one "free-hand" and link it back to Project. Either way, the schedule can be "refreshed" or updated when the Project dates change.



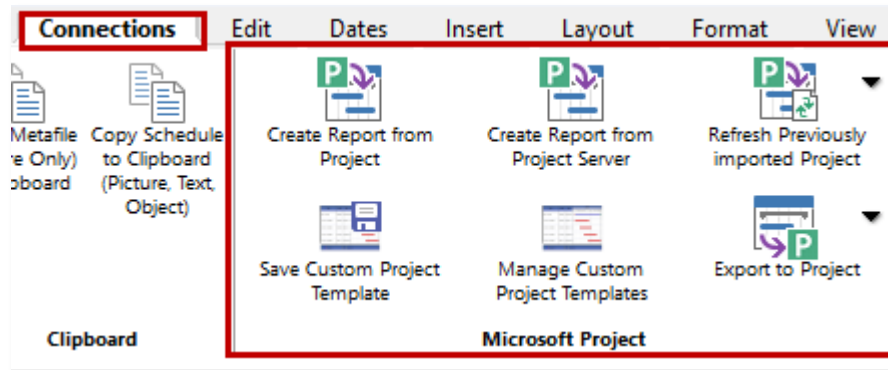
With Milestones Professional's interface to Microsoft Project, you can:

- ◆ Use a simple wizard to choose how to present your Microsoft Project schedules.
- ◆ Create custom Project import templates and add them to the wizard.
- ◆ Keep presentation schedules up-to-date using "refresh." Update a single Milestones presentation schedule from one Microsoft Project schedule or from several.
- ◆ Easily add new Project tasks to the Milestones schedule. Add them in one at a time or as a group.
- ◆ When the Project information is updated in Milestones Professional generate a Comparison schedule to see the old dates compared to the updated dates.

# Create Presentation Reports For MICROSOFT PROJECT

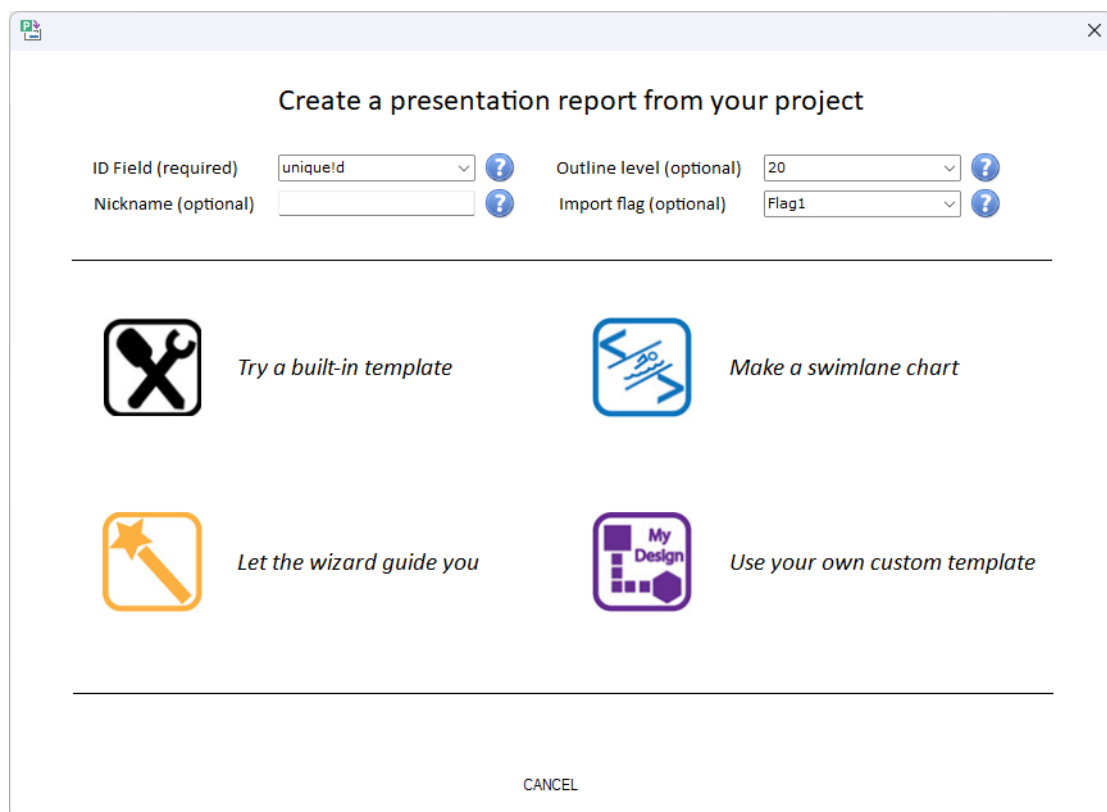
## Create reports using a simple wizard

On the **Connections** tab, choose **Create Report from Project** or **Create Report from Project Server** to begin the Project to Milestones Wizard.



The **Project to Milestones Wizard** offers a visual representation of the schedule as it is created, allowing you to see the effects of the formatting choices you make in a dynamically updated screen.

Start with one of the built-in formats or use your own custom chart to begin. Follow the prompts and watch as your Microsoft Project information is brought into a presentation ready Milestones schedule.



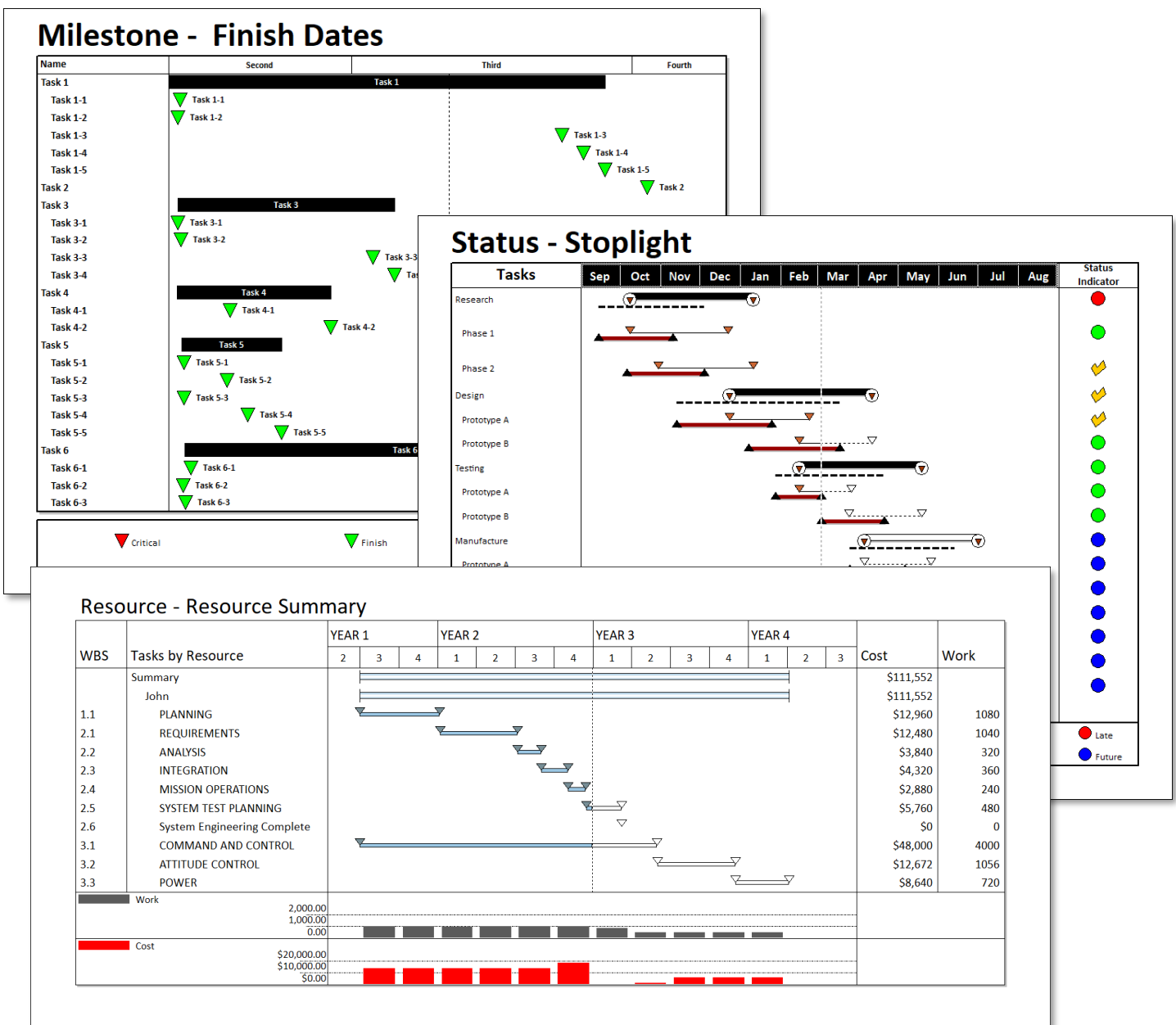
# Create Presentation Reports For MICROSOFT PROJECT

## Wizard Import Options

The wizards offer a variety of built-in templates, a Step-by-Step guide for personal selection of the information to be imported, or swimlane style charts using codes to have your information imported just as you like. Then those imported customized schedules can be saved into the Wizard for future importing.

## Choose a built-in template

For quick importing the Project to Milestones Wizard offers 10 built-in template categories: Top Templates, Gantt, Stoplight, Milestones, Summary, Earned Value, Resource, Status, Dashboard and Special. Each category has a variety of formats.



# Create Presentation Reports For MICROSOFT PROJECT

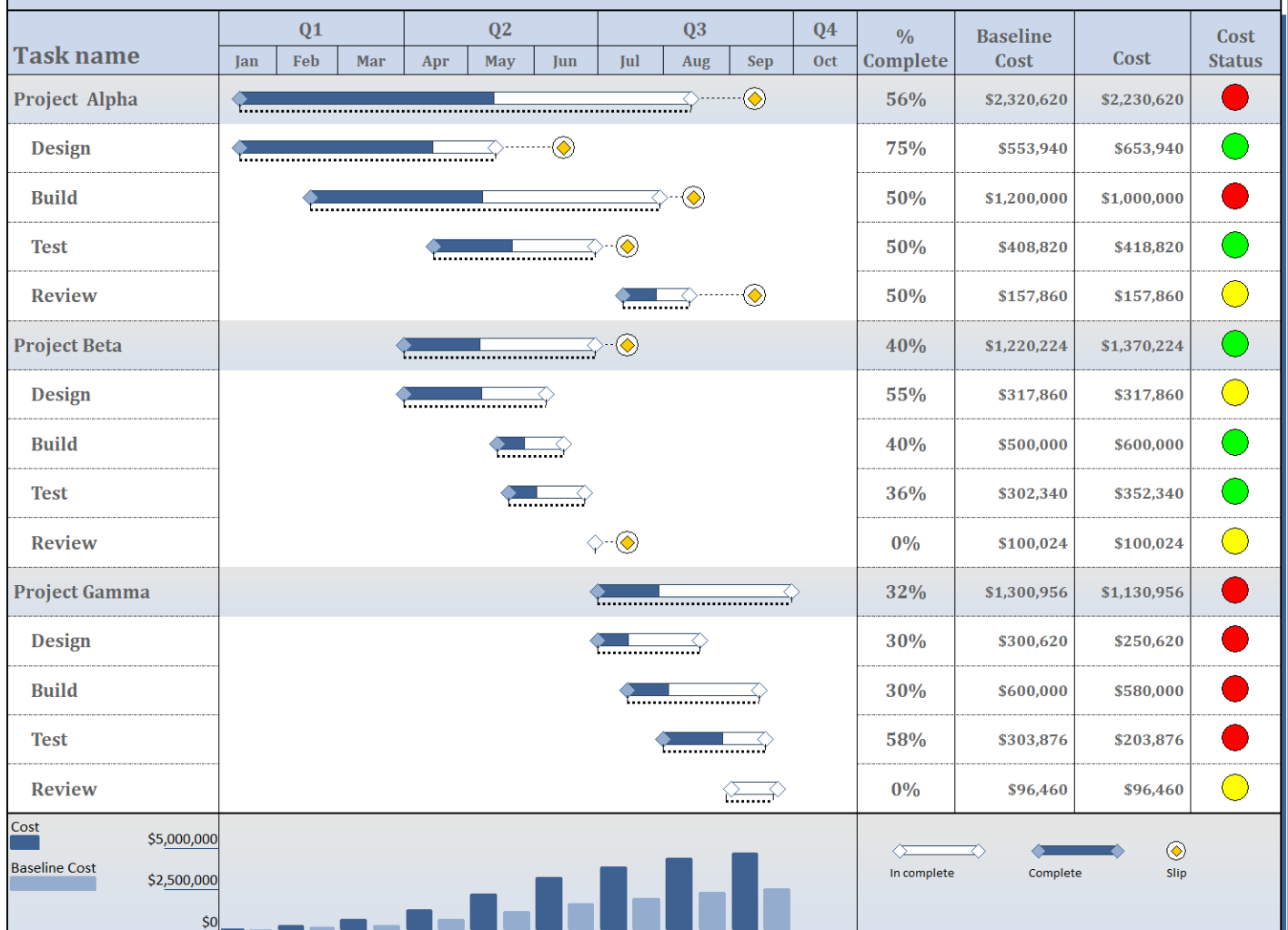
## Wizard Import Options (cont'd.)

### Let the wizard guide you

The “Let the Wizard guide you” option offers more flexibility as to what information is imported into the resulting Milestones Professional schedule. The wizard will step you through each element of your schedule.

- ◆ Select from a built in template or use your own template.
- ◆ Add Columns to import information from Microsoft Project file's fields.
- ◆ Add DataGraphs to chart values from the Microsoft Project file.
- ◆ Add Stoplight columns to highlight tasks status.
- ◆ Add symbol and note text using information from the Microsoft Project file's fields.

### Let The Wizard Guide You



# Create Presentation Reports For MICROSOFT PROJECT

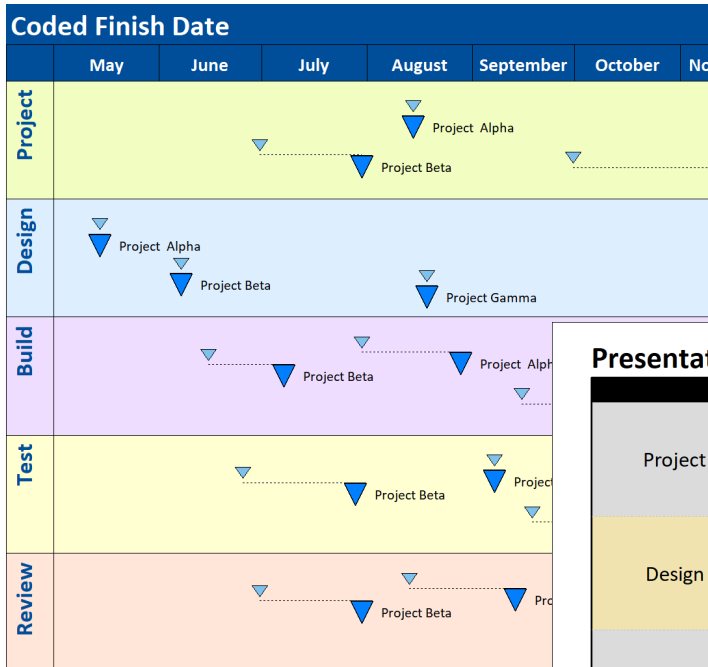
## Wizard Import Options (cont'd.)

### Make a swimlane chart

Do you want to display key tasks or milestones in specified sections with a variety of looks? Try using one of the “coded” templates, specifically designed for making swim lane schedules.

**A single code column added to a Microsoft Project file** makes it easy for the Project to Milestones Wizard to generate a variety of schedules. These schedules import specific symbology into specified colored swim-lanes.

Text1	Task Name	◆ Coded Microsoft Project file	
Pro	Project Alpha	Wed 1/15/20	Fri 8/14/20
DES	Design	Wed 1/15/20	Thu 5/14/20
BUI	Build	Fri 5/15/20	Fri 8/28/20
TES	Test	Wed 4/15/20	Mon 9/7/20
REV	Review	Mon 7/13/20	Sun 9/13/20
Pro	Project Beta	Wed 4/1/20	Thu 7/30/20
DES	Design	Wed 4/1/20	Sun 6/7/20
BUI	Build	Mon 6/8/20	Tue 7/7/20



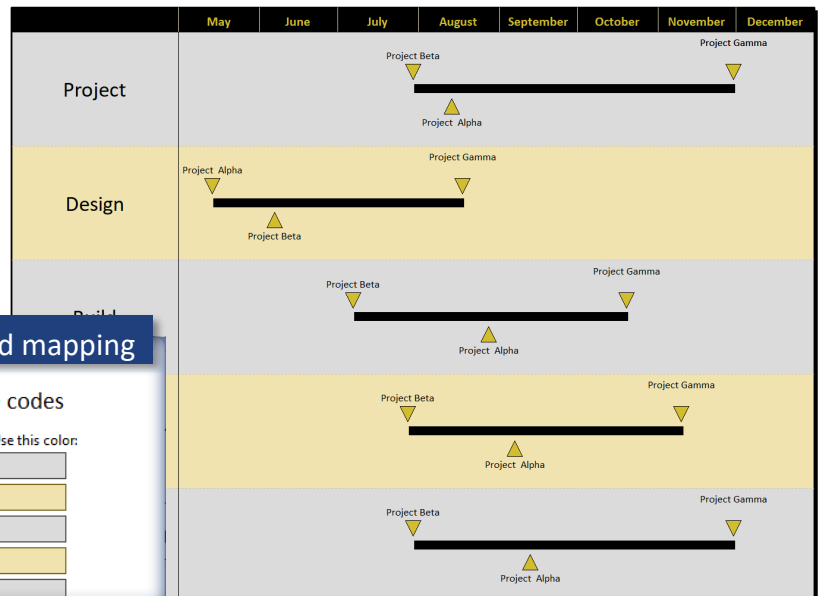
**◆ Milestones Professional coded map-**

Project to Milestones Wizard - Set up swimlane codes

Set	For this code:	Use this title:	Use this color:
Set 1	Pro	Project	
	DES	Design	
	BUI	Build	
	TES	Test	
	REV	Review	

Buttons: Save, Retrieve, Delete

### Presentation Timeline



**◆ Milestones Professional coded mapping**

Project to Milestones Wizard - Set up swimlane codes

Set	For this code:	Use this title:	Use this color:
Set 3	Pro	Project	
	DES	Design	
	BUI	Build	
	TES	Test	
	REV	Review	

Buttons: Save, Retrieve, Delete

# Create Presentation Reports For MICROSOFT PROJECT

## Wizard Import Options (cont'd.)

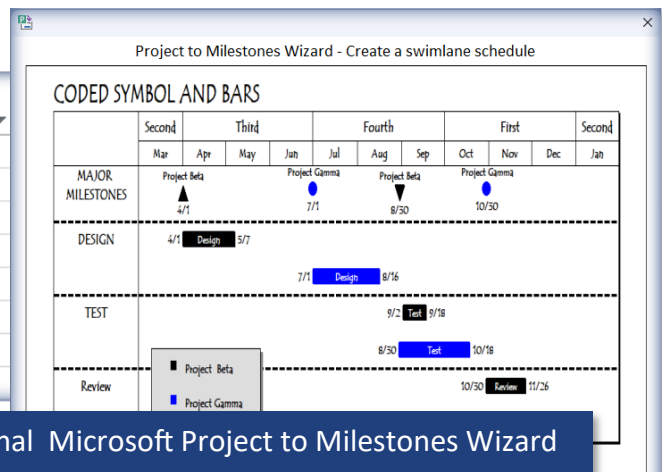
### Make a swimlane chart

Try using one of the “coded” templates, specifically designed for making swim lane schedules.

**Three code columns added to a Microsoft Project file** allows Milestones Professional’s Microsoft Project to Milestones Wizard to generate a schedule, using your template, importing task into specific rows with specific symbology (i.e.: start date + bar + end date) and symbols and symbols-horizontal bars-symbol combinations. import specific symbology into specified colored swimlanes.

#### ◆ Coded Microsoft Project file

Number 1 Row	Number 2 Symbology	Number 3 Toolbox Row	Task Name	Start
1	3	1	Project Beta	Mon 4/1/24
3	6	2	Design	Mon 4/1/24
5	6	2	Test	Sat 6/1/24
7	6	2	Review	Fri 8/30/24
2	3	3	Project Gamma	Mon 7/1/24
4	6	4	Design	Mon 7/1/24
6	6	4	Test	Fri 8/30/24
8	6	4	Review	Wed 10/30/24



#### ◆ Milestones Professional Microsoft Project to Milestones Wizard

Pick a type: Coded Symbols And Bars

Code Field: Text1, Length: 3, Title Field: none, Symbol Text: Name, Symbol Note: resourcenames

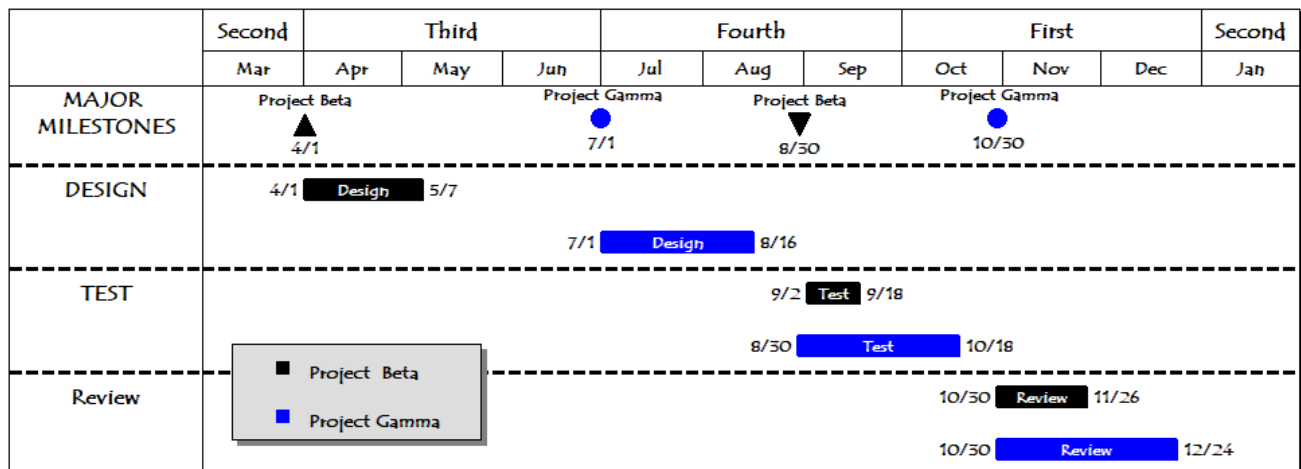
Set Code Names and Colors: help

Milestones row: number1, Symbology: number2, Toolbox row: number3, Status Field: None

Use custom template: ☒ Get Template

<< back cancel finish next >>

#### CODED SYMBOL AND BARS



# Create Presentation Reports For MICROSOFT PROJECT

## Wizard Import Options (cont'd.)

### Create a custom template

You have tweaked your Wizard imported schedule to fit your corporate standard. Now, that schedule can be added to the Wizard. Save the schedule as a **Custom Project template**. Then, next time you need to import a Microsoft Project file the saved schedule template will be available in the wizard when you select **Create a custom template**.

#### Options to Customize:

- ◆ Add columns
- ◆ Customize symbols and symbols-horizontal bars-symbol combinations
- ◆ Add Freeform text
- ◆ Customize legend
- ◆ Customize schedule colors
- ◆ Customize symbol Note attributes
- ◆ Customize global, and outline horizontal gridlines and shading
- ◆ Customize vertical gridlines
- ◆ Customize font styles for each area of the schedule

Project to Milestones Wizard - Custom template options

MY CUSTOM PROJECT IMPORT TEMPLATE																
% complete	WBS	Name	Duration	Q1	Q2	Q3	Q4	Cost	Remaining Cost	Actual Cost						
				Jan	Feb	Mar	Apr	May	Jun	Jul	Aug	Sep	Oct	Nov	Dec	
52%	1	Project Alpha	153 days											\$2,224,300	\$1,160,000	\$1,064,300
75%	1.1	Design	87 days											\$653,940	\$160,000	\$493,940
0%	1.2	Build	76 days											\$1,000,000	\$1,000,000	\$0
100%	1.3	Test	27.5 days											\$414,420	\$0	\$414,420
100%	1.4	Review	12 days											\$155,940	\$0	\$155,940
47%	2	Project Beta	87 days											\$1,368,062	\$836,656	\$531,406
55%	2.1	Design	49 days											\$317,860	\$139,500	\$178,360
0%	2.2	Build	22 days											\$600,000	\$600,000	\$0
100%	2.3	Test	12.51 days											\$350,022	\$0	\$350,022
3%	2.4	Review	1 day											\$100,180	\$97,156	\$3,024
24%	3	Project Gamma	109 days											\$1,137,836	\$922,790	\$215,046
30%	3.1	Design	35 days											\$250,620	\$171,500	\$79,120
0%	3.2	Build	45 days											\$580,000	\$580,000	\$0
58%	3.3	Test	36 days											\$203,876	\$85,560	\$118,316
17%	3.4	Review	52 days											\$103,340	\$85,730	\$17,610

Baseline Summary    Summary    Current Plan    Critical

MY CUSTOM PROJECT IMPORT TEMPLATE.mlp

MY CUSTOM PROJECT IMPORT TEMPLATE.mlp

MY CODED FINISH DATE.mlp

MY Presentation Timeline.mlp

☒ Project summary bars

☒ Reset date range

☐ Critical tasks red

Start text

1: none

2: none

3: none

Note: none

Finish text

1: none

2: none

3: none

Note: none

<< back    cancel    finish





# Create Presentation Reports For MICROSOFT PROJECT

## Build a "Free Form" Presentation Schedule

Link it to Microsoft Project schedule and keep it updated (cont'd)

Simultaneously build

a Milestones Professional schedule and link to Microsoft Project file(s)

◆ Select one or multiple Microsoft Project task(s)

ID	Task Name	Start	Finish
0	AERO Build	Mon 1/4/10	Fri 12/21/18
1	Phase 1 - Develop Plans	Mon 1/4/10	Thu 10/4/12
2	5 Develop structural plans	Mon 1/4/10	Wed 5/18/11
3	9 Design Internal Layout	Wed 5/18/11	Wed 11/2/11
4	8 Develop Materials Plans and Sources	Wed 11/2/11	Wed 4/18/12
5	35 Develop materials	Fri 4/20/12	Thu 7/12/12
6	10 Go / No go	Fri 7/13/12	Thu 10/4/12
7	14 Plans Designed and Approved	Thu 10/4/12	Thu 10/4/12
8	2 Phase 2 - Develop Prototype	Thu 10/4/12	Wed 11/20/13
9	11 Develop Prototype plans	Fri 10/19/12	Thu 4/4/13
10	6 Approve Prototype Contractor	Fri 10/5/12	Thu 12/27/12
11	15 Approve Prototype Contractor	Thu 10/18/12	Wed 12/12/12
12	16 Build Prototype	Thu 12/20/12	Wed 11/20/13

### DEVELOPMENT

Link to Active MS Project Task with UniqueID  
Link to Active MS Project Task...

◆ Right the task row in the Milestones Professional file. Select **Link to active MS Project Task**. Milestones will retain the previous settings chosen (the date field and the ID for tag) and allow you to link symbols similarly by selecting the **Link to active MS Project Task** showing the selected options.

☒ Add Symbology to schedule

- ☐ On single row (Add all dates to the selected row. Do not tag row.)
- ☒ On new rows (Add all dates to new rows below the selected row. Tag rows.)
- ☐ Outline tasks on new rows ☒ Ignore Times

- ◆ Select to put task on same row selected or subsequent rows.
- ◆ Choose the symbology type: **Bar with Start and Finish**.
- ◆ Choose the symbol-horizontal bar-symbol combination from the toolbox.
- ◆ Add Text to symbols.

Symbology: Milestone: Start and Finish

☐ Use best symbols and bars

☒ Choose symbols and bars

Toolbox Row: 3

Type: Normal Normal

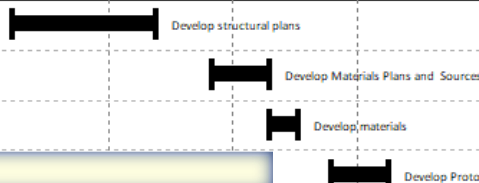
Level: 0 0

% Complete  Set %

☒ Tag Symbol Text and Notes

Start text and note		Finish text and note	
Line 1	none	Line 1	Name
Line 2	none	Line 2	none
Line 3	none	Line 3	none
Note	none	Note	none

### DEVELOPMENT

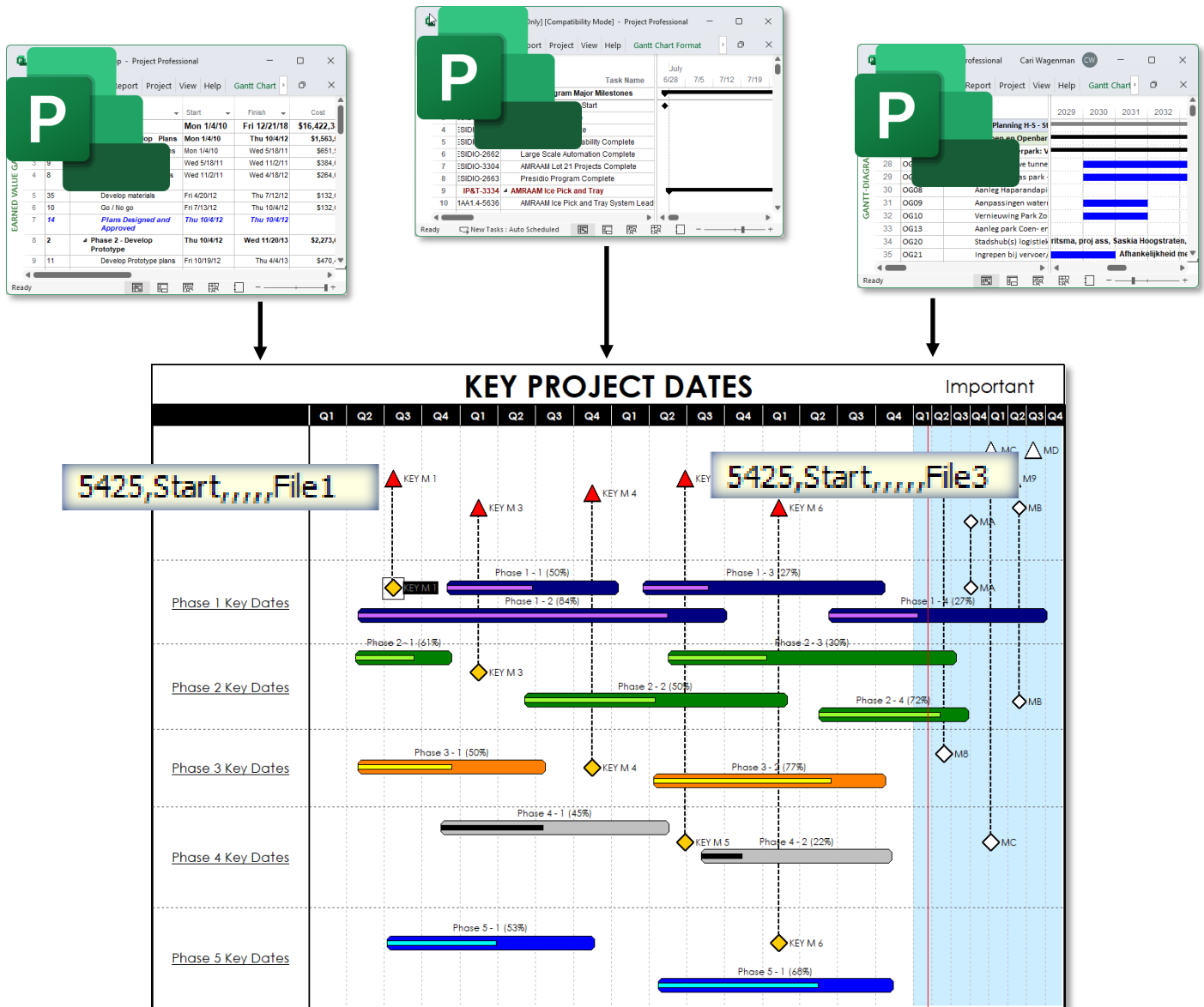


◆ Tagged and ready for Refresh.

# Create Presentation Reports For MICROSOFT PROJECT

## Refresh a Milestones Professional File From Multiple Microsoft Project Files

Using Nicknames and a Refresh File List you can build a Milestones Professional schedule from multiple Microsoft Project files and update the Milestones Professional file when the Microsoft Project file changes.



- ◆ Build the Milestones Professional schedule from multiple Microsoft Project files using Nicknames.
  - Nicknames control over numbering scheme assures guaranteed unique numbering.
- ◆ Set up a Refresh List of the multiple Microsoft Project files for Refresh.
  - Schedules can be maintained by multiple individuals and brought together by someone who would only need “read-only” access to create the presentation chart.

# Create Presentation Reports For MICROSOFT PROJECT

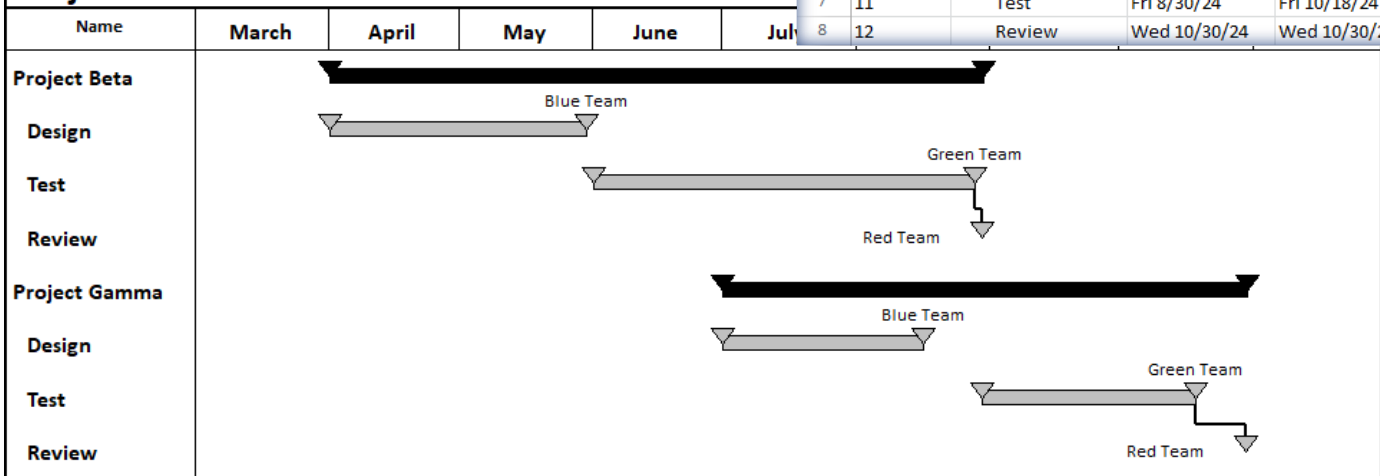
## Stay Up To Date as Project Dates Change with “Refresh”

"Refresh" refers to updating symbols' dates, column text, and column values in Milestones Professional with the latest information in the Microsoft Project files that were used to create the Milestones schedule.

- ◆ Original Microsoft Project File
- ◆ Original Milestone Professional File

	Unique ID	Task Name	Start	Finish
1	5	Project Beta	Mon 4/1/24	Fri 8/30/24
2	6	Design	Mon 4/1/24	Thu 5/30/24
3	7	Test	Sat 6/1/24	Wed 8/28/24
4	8	Review	Fri 8/30/24	Fri 8/30/24
5	9	Project Gamma	Mon 7/1/24	Wed 10/30/24
6	10	Design	Mon 7/1/24	Fri 8/16/24
7	11	Test	Fri 8/30/24	Fri 10/18/24
8	12	Review	Wed 10/30/24	Wed 10/30/24

### Project Tasks APRIL Review

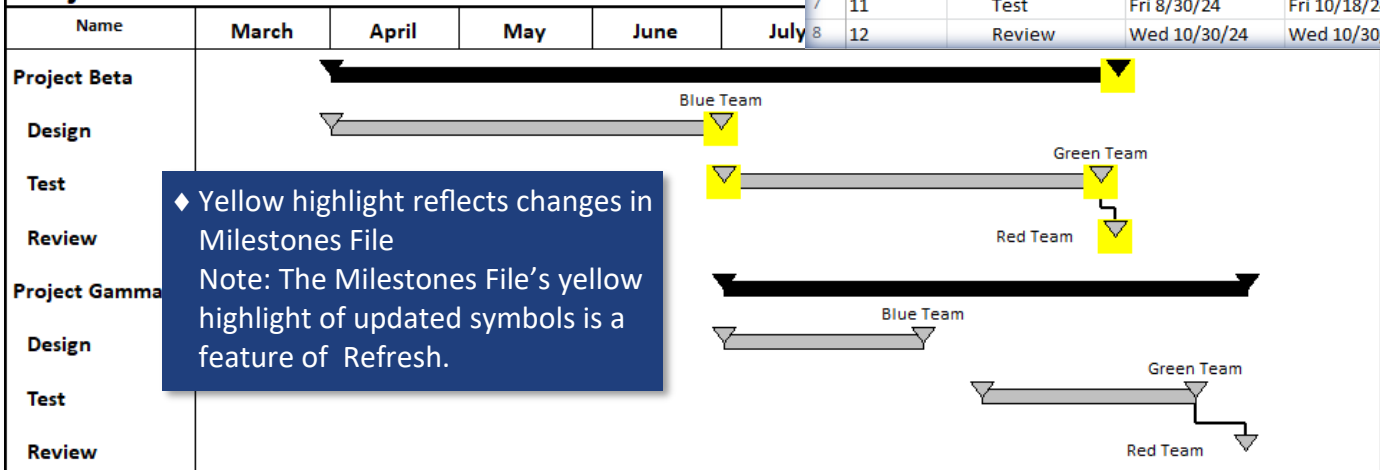


- ◆ Updated Microsoft Project File
- ◆ Updated Milestone Professional File

- ◆ Yellow highlight reflects changes in Microsoft Project File

	Unique ID	Task Name	Start	Finish
1	5	Project Beta	Mon 4/1/24	Mon 9/30/24
2	6	Design	Mon 4/1/24	Sun 6/30/24
3	7	Test	Mon 7/1/24	Thu 9/26/24
4	8	Review	Mon 9/30/24	Mon 9/30/24
5	9	Project Gamma	Mon 7/1/24	Wed 10/30/24
6	10	Design	Mon 7/1/24	Fri 8/16/24
7	11	Test	Fri 8/30/24	Fri 10/18/24
8	12	Review	Wed 10/30/24	Wed 10/30/24

### Project Tasks JUNE Review



- ◆ Yellow highlight reflects changes in Milestones File
- Note: The Milestones File's yellow highlight of updated symbols is a feature of Refresh.

# Create Presentation Reports For MICROSOFT PROJECT

## Compare Original Milestones Professional File to Updated File

It is useful to be able to get a report of differences between a Milestones file which was imported from Microsoft Project and your most recently refreshed version of the file (the “updated” file). Now, with the File Compare feature, it’s possible to view a Milestones Professional schedule which graphically presents the changes. Connections → Refresh Previously Imported Project → Compare Tagged Files

