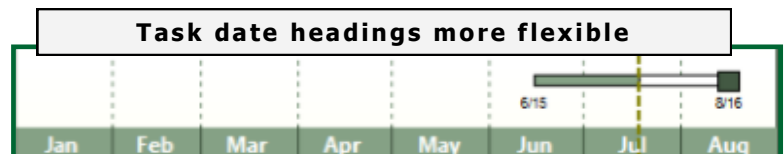
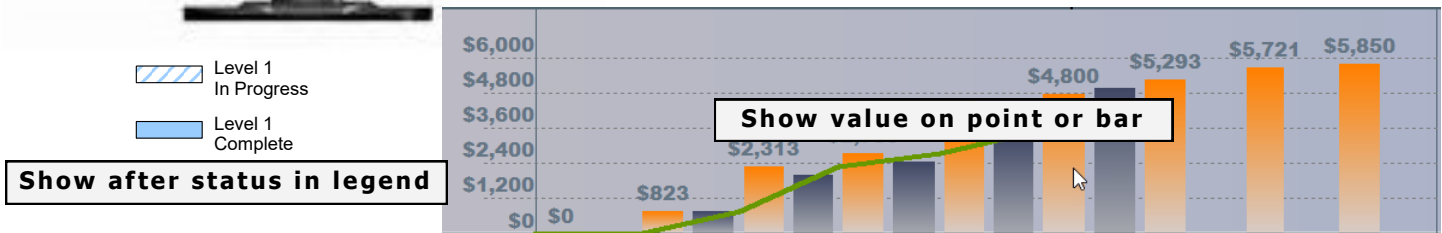
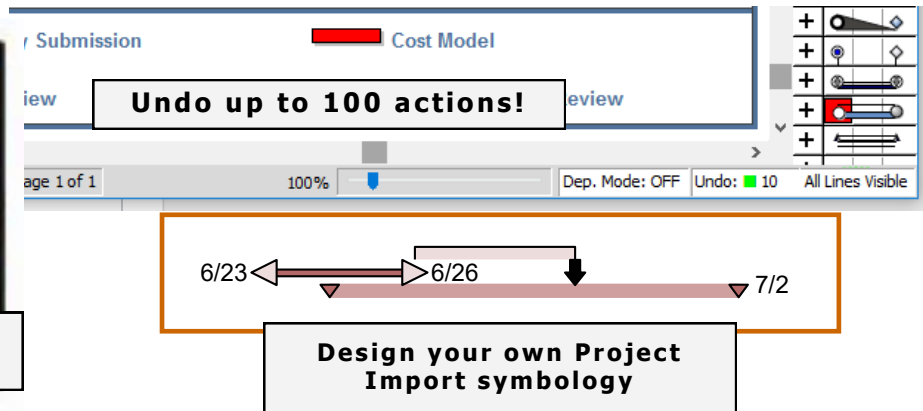
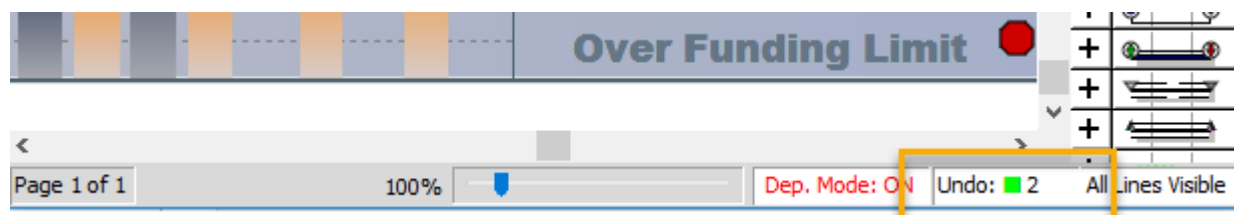
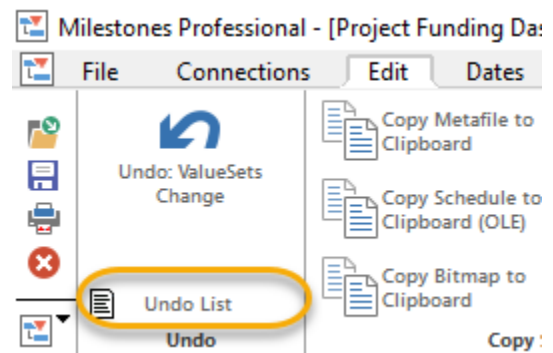
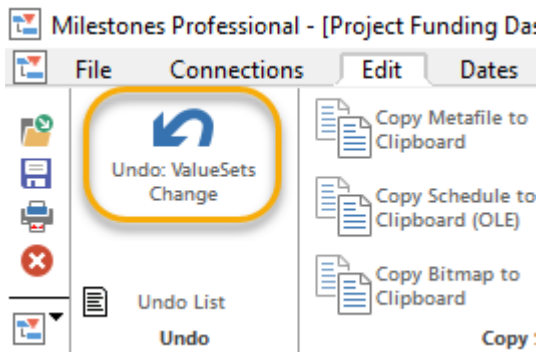
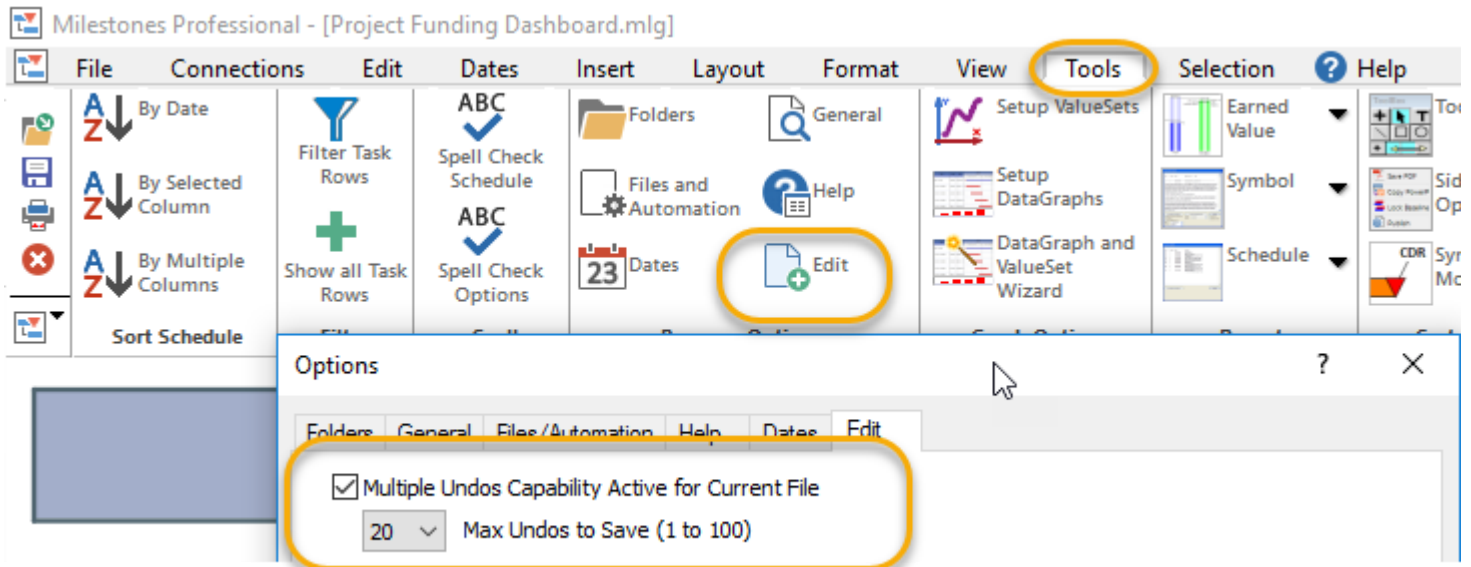


- ◆ Full undo feature, with the ability to undo up to 100 actions. An undo counter on the status bar indicates how many actions can be "undone."
- ◆ Intuitive CTRL-A to select either all symbols or all tasks.
- ◆ Independent date headings can be attached to task rows.
- ◆ View the selected symbol in the status bar.
- ◆ Add a web or file link to any freeform text block.
- ◆ Choose border line pattern and colors for free-form text blocks. Also, change the colors of individual lines of text.
- ◆ Support for hi-res monitors.
- ◆ It's now possible to select a group of symbols and shift their dates.
- ◆ Show the after status (incomplete) version of a bar in the legend.
- ◆ Design your own import symbology for Microsoft Project.
- ◆ When linking to Microsoft Project, select a group of tasks to import.
- ◆ Create a variety of schedules from Microsoft Outlook calendar or tasks using a simple wizard. Also, export a Milestones Professional schedule to Outlook as a task list.
- ◆ Create a schedule from Excel and keep it up to date with a refresh.
- ◆ Much more!



Improved Undo

A new Multiple Undo feature has been added to Milestones. Now all actions can be undone. You can set the number of actions that can be undone from 1 to 100 (the default is 20). This is done using the Tools | Program Options | Edit screen:



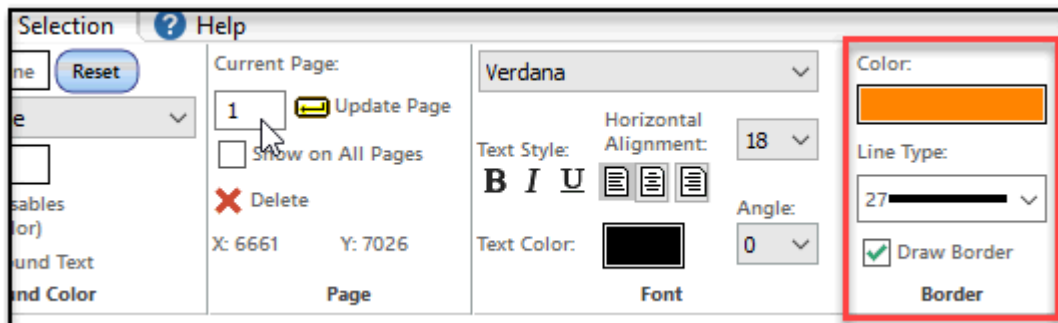
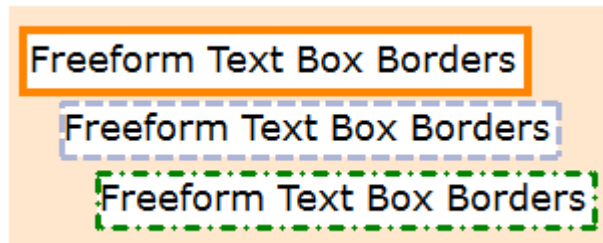
Line by Line Color for Freeform Text

Now, individual lines of free-form text can be colored.



Border choices for Freeform text

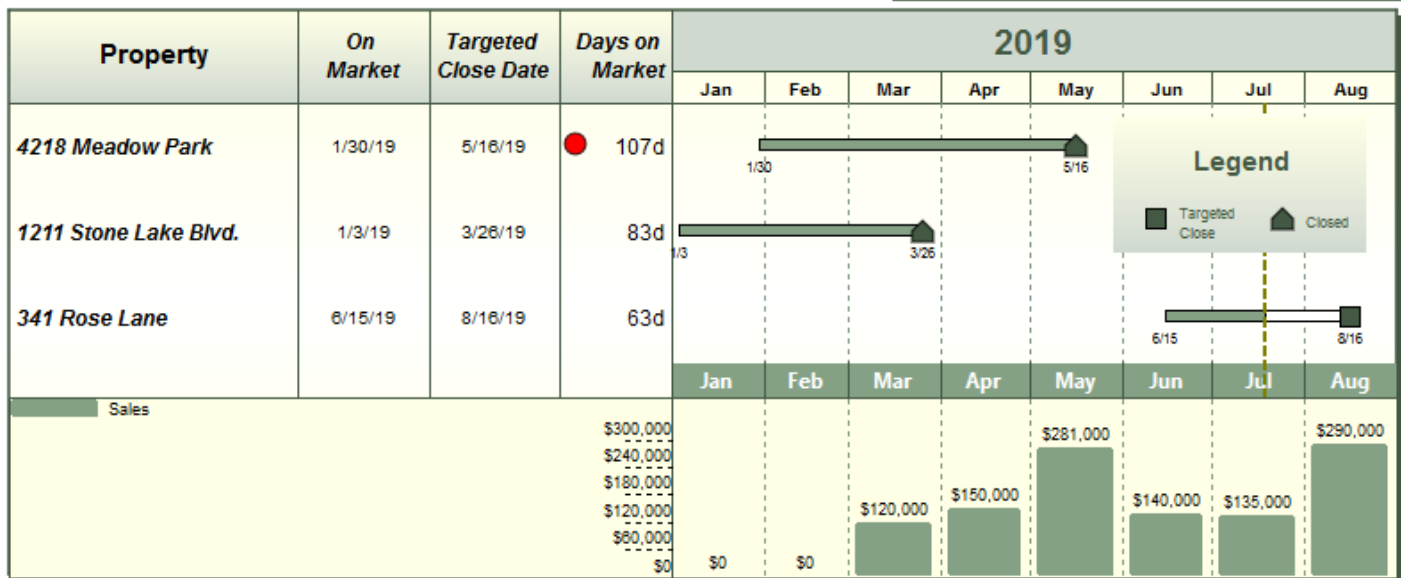
Change the color and the line pattern for individual blocks of text..



Date headings attached to rows can be different than main headings

It is now possible to attach any single type of date heading to a row. Now, when you right-click on the menu to attach a date heading to a row, a dialog appears that lets you remove the heading, attach a copy of the schedule headings, or a single independent heading of any type:

PropertyTracking Schedule



Single Row Date Heading Overlay

Show a Date Heading in the selected row. You can either repeat the current date headings or select a single heading.

The heading will overlay other info on the row, such as symbols, bars, gridlines, etc.

☐ Do not overlay a date heading
 ☐ Use current date headings
 ☒ Pick a single heading from the list below:

Monthly: 1, 2, 3,... 12, 13

Start: 1

Freq: 1

Start and Frequency only apply to generically numbered headings

Single Heading Background

Background Color:

Target Color:

Special Effects: Fade to Center (V)

Single Heading Font Settings

☐ Left
 ☒ Center
 ☐ Right

☒ Bold
 ☐ Italic
 ☐ Under

Font: Segoe UI

Color:

Size: 12

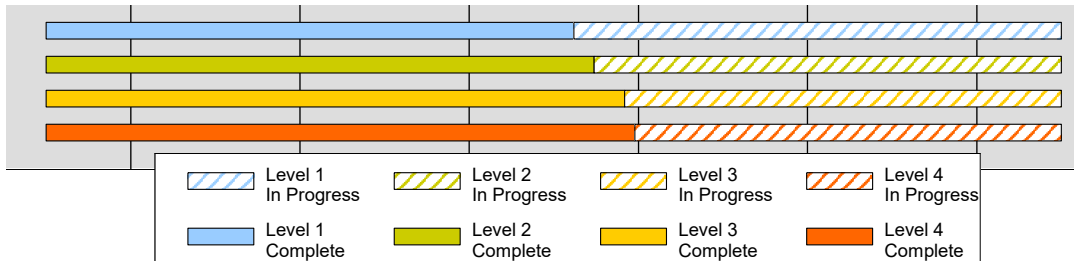
OK

Cancel

Milestones Professional 2017 New Features © KIDASA Software, Inc. October 2016 www.kidasa.com

Legend can now automatically show after status (incomplete) version of symbols/bar

If you check the "Show After Status Settings" in the Legend Entry Edit screen, the legend will show the after status (incomplete) version of the symbols/bar. This makes it easier for people who wish to show legend entries for both complete and incomplete tasks. They no longer need to manually create an incomplete version of their symbols/bar:



Selectively suppress interior column dividers

It's now possible to suppress the interior column dividers on just one side of the schedule:

Percent Complete	3.0	Start Date	Revised Finish	Baseline Start	Baseline End	2018								Baseline Cost	Current Costs	Cost Variance
						2	3	4	5	6	7	8				
<div><div></div></div> 65%	3.0	2/15/18	8/2/18	2/15/18	8/2/18	<div><div></div><div></div></div>								\$1,601,305	\$887,525	↑\$713,780
<div><div></div></div> 100%	Project 1	2/15/18	4/18/18	2/15/18	4/18/18	<div><div></div><div></div></div>								\$432,080	\$433,000	↓(\$920)
<div><div></div></div> 100%	Project 2	3/22/18	4/18/18	3/22/18	4/18/18	<div><div></div><div></div></div>								\$189,000	\$48,775	↑\$140,225
<div><div></div></div> 100%	Project 3	4/19/18	5/10/18	4/19/18	5/11/18	<div><div></div><div></div></div>								\$165,000	\$165,000	▶\$0

Automatic Page Breaks

You can now insert Page Breaks automatically based upon outline level or number of rows:

×

Insert Automatic Page Breaks

This dialog box allows you to insert page breaks automatically into your schedule, based on the following options:

Insert Page Breaks:

☒ Based on outline level
This option will put each Outline level 1 task and all of its subtasks on separate pages

☐ Based on number of rows
This option will insert page breaks after this number of rows:

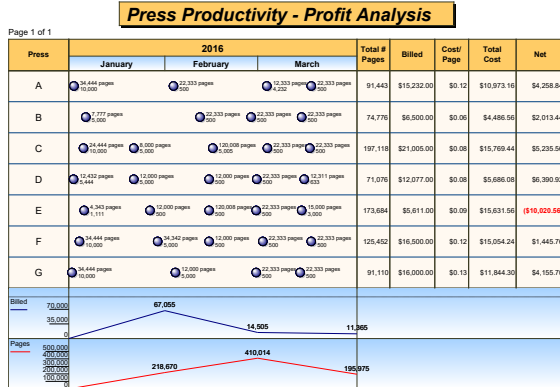
Additional Options:

☐ Hide Legend

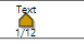
OK Cancel

Assign default values to toolbox symbols

It's now possible to add default ValueSet values to a toolbox symbol. Each symbol can include a default for any or all of the 9 available ValueSets. This makes it easy to build DataGraphs which rely on constant values.



Symbol Options

Sample Symbol: 

Symbol Shape | Color/Pattern/Size/Shadow | Text/Date Properties | Default Text | **Default Values**

Symbol ValueSets

Key any default symbol values for this symbol type. Each time this symbol is placed on the schedule, the values below will be set as the symbol value. You can change it later by double-clicking on the symbol on the schedule and replacing the value.

The values you enter here will not replace the values of any of these symbol types once they have been placed on the schedule. The Clear Entries button only clears the entries below. It has no effect on symbols that are already on the schedule.

Default ValueSet values. Enter the default values below:

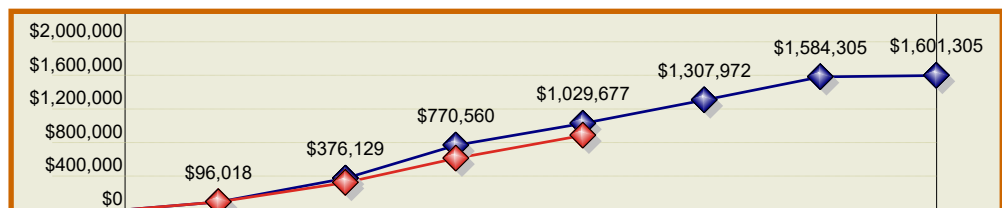
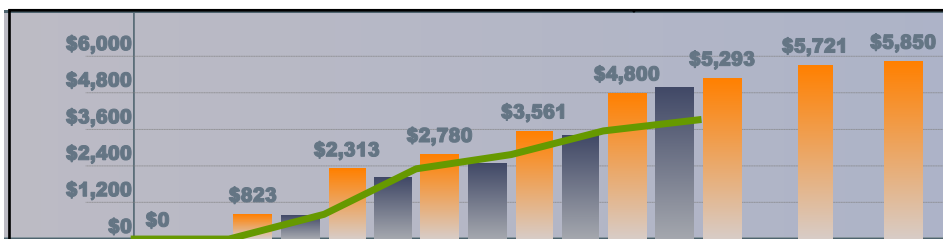
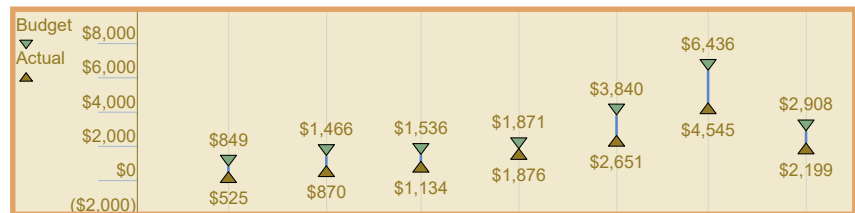
vset 1	vset 4	vset 7
1: 1.100	4: 4.400	7: 7.700
vset 2	vset 5	vset 8
2: 2.200	5: 5.500	8: 8.800
vset 3	vset 6	vset 9
3: 3.300	6: 6.600	9: 9.900

Clear Entries

OK Cancel

Show the value next to the point or bar

A new ValueSet property makes it possible to display values near the point (point and line graphs) or near the bar for a bar graph.



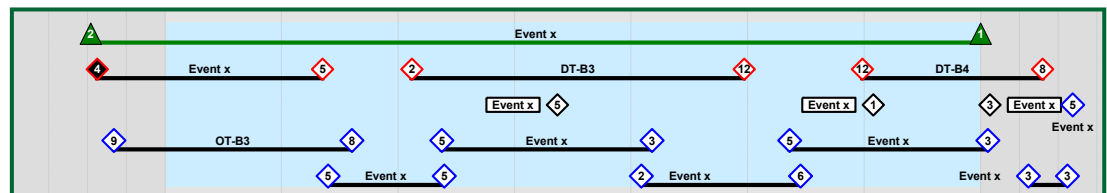
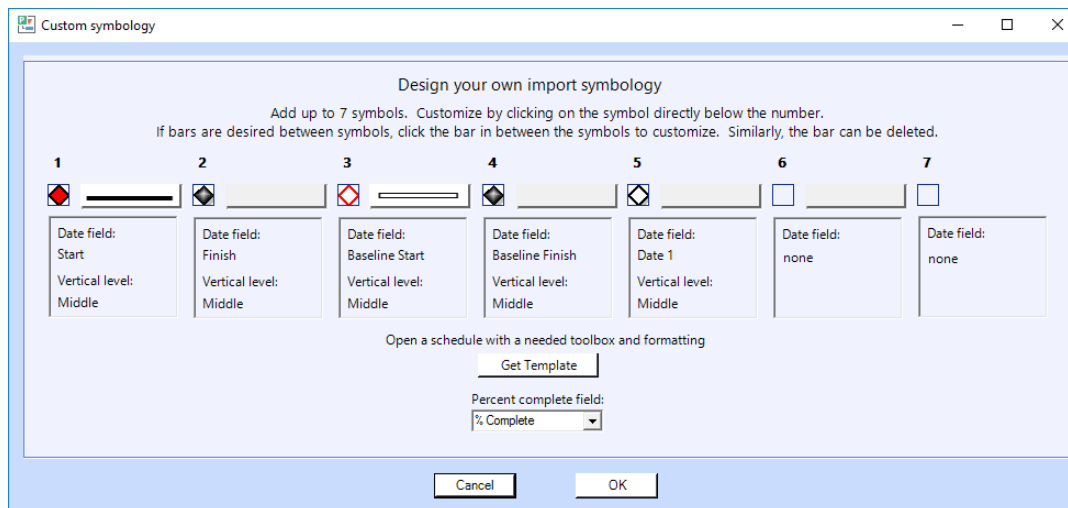
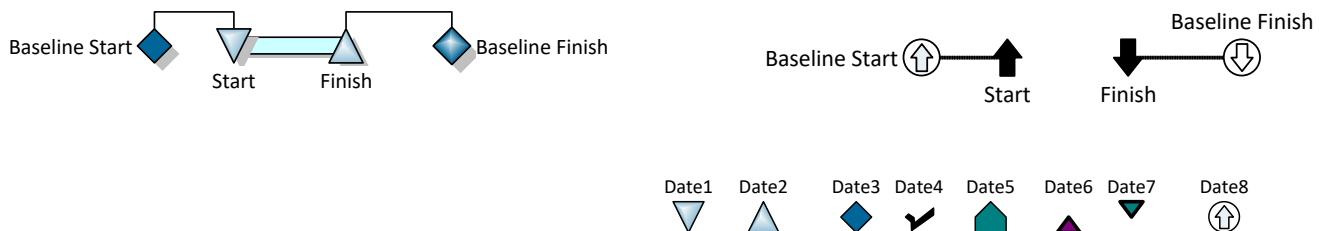
2017 New Project Interface Features

Design your own custom symbology

Custom symbology is available in 3 places.

- As an option for ad-hoc import of tasks, via *Link to active Project Task*
- *Import* | *Let the Wizard Guide You* | *Custom*
- In the refresh dialog, used for the *Append tasks* option.

Whether refreshing, importing, or adding tasks to an existing presentation schedule, it's possible to design your own symbology set. Some examples of symbology which can be customized:



Link to Active MS Project Task—add several tasks at once

In past versions, one Microsoft Project task could be linked via the “Link to Active MS Project task” feature. Now, groups of tasks can be selected in Microsoft Project. Then, the link feature makes it possible to link all selected tasks at once. One option is add all dates from selected tasks to a single row on the Milestones chart. The other option is to have Milestones add new rows for each Project task.

Link to Active MS Project Task...

Tag task rows
Tag with this ID field for future updates: UniqueID
File nickname for project refresh:

Add tasks using:
☒ Custom symbology
☐ Standard symbology
Customize

Add tasks:
☐ All on selected row
☒ On new rows
☒ Outline new task(s)

Add new Project tasks to Milestones more easily

When using the refresh feature, an option to “append” new tasks is available. Now, it’s possible to use a Project Flag field to indicate the tasks to be added. Additionally, it’s possible to use a Microsoft Project Number field to specify the Milestones row for the new task(s).

Milestones Refresh Options - Refresh from Microsoft Project

Refresh Using: UniqueID

SYMBOL TEXT
☒ Refresh Symbol Text
☒ Update only symbols with symbol text tags
☐ Update start and finish symbols using:
Start: none Finish: none
Start: none Finish: none
Start: none Finish: none

PERCENT COMPLETE
☒ Refresh percent complete
☒ Update individual bars & symbols
% complete field:

OPTIONS
☐ Refresh tagged columns
☐ Update dependent symbols
☒ Ignore times (compare date only)
☐ Highlight Changed Dates
☒ Reset date Range
☒ Append new tasks Customize
☐ Report obsolete milestones
☐ Highlight obsolete milestones
☒ Report missing Project tasks
Constraint Field:

Options for adding new tasks

Tasks to bring in:
Add all tasks which are not already on the schedule.
☒ All Tasks
Add only tasks with this flag field set to Yes.
Tasks with this flag: Flag 1

Add new tasks:
Add new tasks at the bottom of the schedule.
☒ At bottom
Pick a number field in the Project file which indicates the Milestones row for each task.
☐ Add/merge on rows specified
Number 1

Symbology:
Pick Project date fields to add and choose symbols and bars.
Customize Symbology

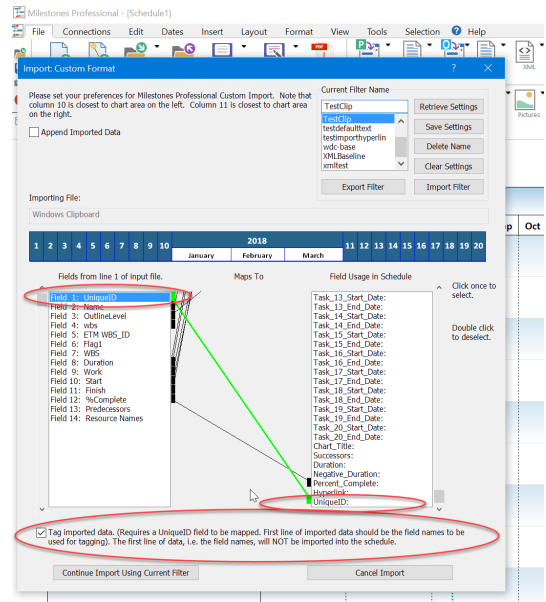
Excel: Smart Import and Custom Import enhanced

Importing from Microsoft Excel (or any table) is now easier than ever. Two methods for importing have been enhanced.

Smart Import, which maps the Microsoft Excel (or table) column headings to fields in Milestones automatically has been enhanced to:

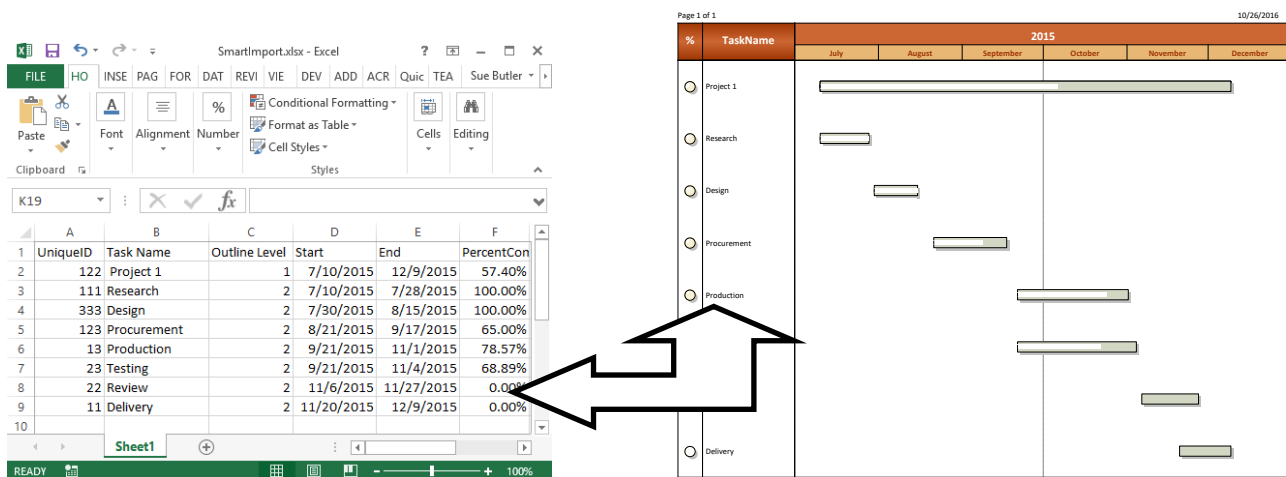
- ⇒ Allow the use of a UniqueID field to tag task rows and symbols in Milestones for future update when the table changes.
- ⇒ Offer a set up screen which can be used to add more flexibility to the column naming. For example, if the spreadsheet column heading for the start date is My Start Date, the setup screen can be used to map that to the task start date.

Custom Import, which offers field mapping using a simple two column mechanism, has also been enhanced to allow the use of a UniqueID field.



Excel: Refresh from a Spreadsheet

it is possible to add a tag to items imported from Excel. It's also possible to refresh a schedule using an Excel table when the dates in the Excel table have changed.



Outlook Import/Export

A new Outlook to Milestones wizard makes it easy to import from Microsoft Outlook. Bring calendar or task items in and produce several presentation Milestone charts using a simple step-by-step wizard.

Outlook to Milestones wizard

Pick a folder:
taskFolder1 (Tasks)

Pick a chart type:
To Do List

Start:
Sunday , September 1, 2013

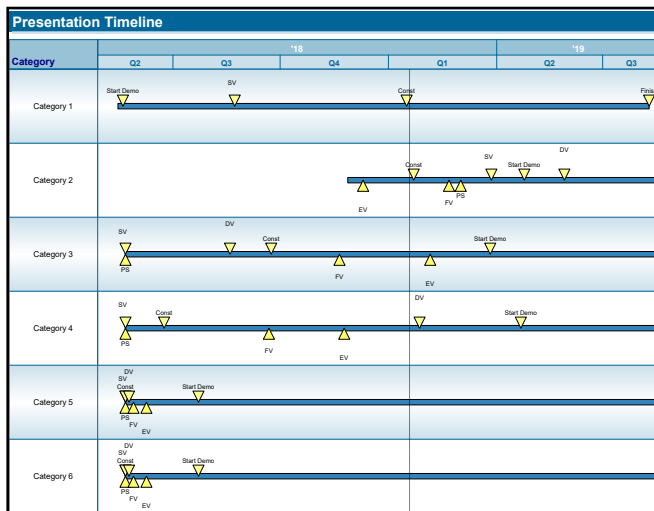
End:
Saturday , September 30, 2017

This selection displays task due dates along with indicators.
Choose next to set symbol text and notes.

What?	January	February	March	Due Date	Status	% Comp.
Program Concept				1/15/18	✓	100%
Copie Technical				3/15/18	●	0%
Copie Marketing				3/15/18	●	0%
Ad				3/15/18	●	0%
Review				3/15/18	●	0%
Production				3/15/18	●	0%
Distribute				3/15/18	●	0%
Follow up				3/15/18	●	0%
Teach Up				3/15/18	●	0%

Planned Start And Finish Not Started Started Completed

Cancel Next > Finish



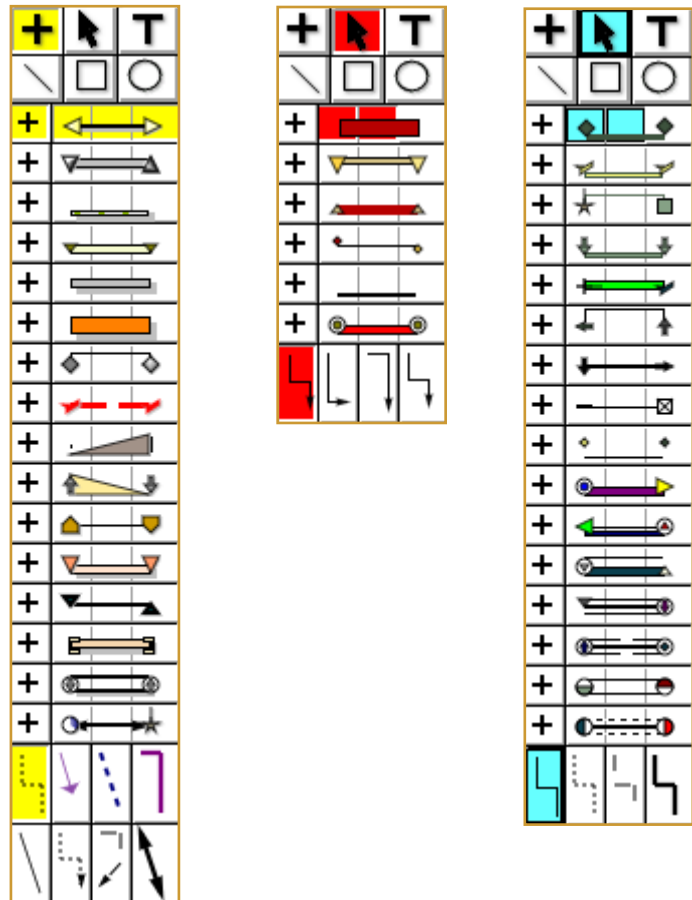
Stoplight Report

% Comp.	Tasks	'13	'14	'15	'16	'17	Status	Priority
	taskFolder1							
●	Project ABC Task 3						●	Low
●	Project ABC Task 4						●	Normal
●	Project ABC Task 1						●	High
	taskFolder1Subfolder1						●	Normal
●	Task 1-3 Add order 1						○	Normal
●	Task 1-1 Add order 2						○	Normal
●	Task 1-9 Add order 3						○	Normal
●	Task 1-4 Add order 4						○	Normal
●	Task 1-1 Addorder 5						○	Normal
	taskFolder1Subfolder1						○	Normal
●	Task 1-3 Add order 1						○	Normal
○	Task 1-1 Add order 2						○	Normal
●	Task 1-9 Add order 3						○	Normal
○	Task 1-4 Add order 4						○	Normal
●	Task 1-1 Addorder 5						○	Normal

Planned Not Started Waiting on someone else Deferred In Progress Complete

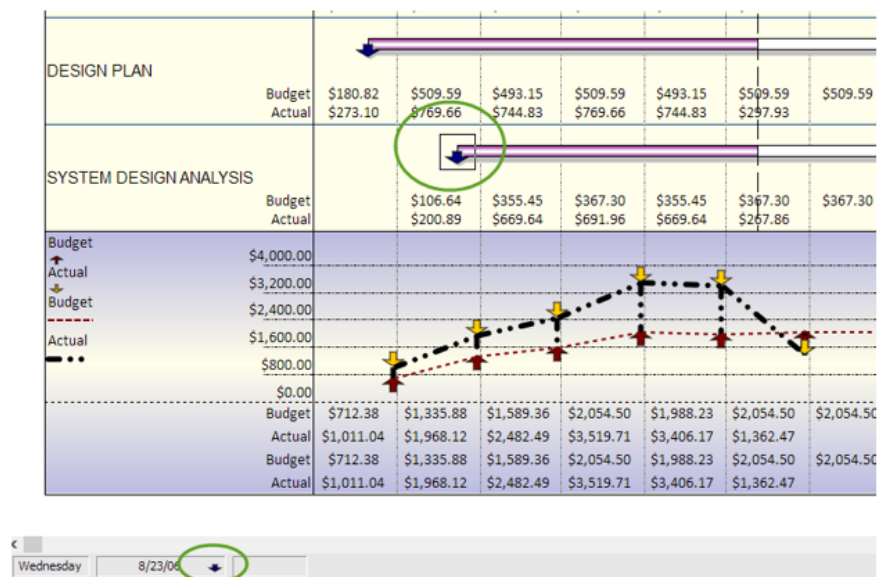
Pick your own toolbox background color

Change the color for the selected item's background. Pick a color that makes it easier for you to be able to see which items are currently selected. Project task)



Show Symbol Type in Status Bar when Symbol is Selected

Now when a symbol is selected, then actual symbol will be shown in the Status Bar:



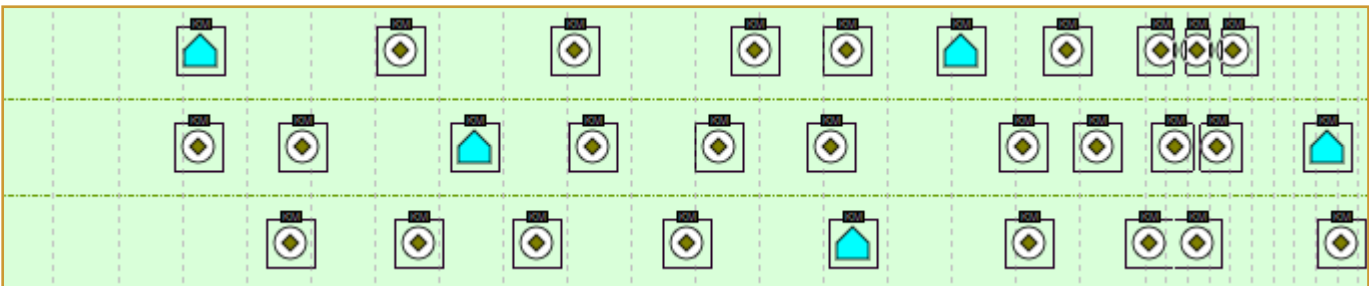
Select all symbols or all tasks

In previous versions, it was necessary to hold down the Shift key to select multiple symbols. Now, once a symbol is selected there are options on the right-click menu to select all symbols of the same type or all symbols on the schedule.

Select all symbols of the same toolbox type:



Select all symbols:



Shift just selected symbols

In addition to shift all dates and shift selected tasks, it's now possible to shift selected symbols.

Condo Project

PHASE	2018
Gas Hookup	Jan 15 - Feb 15
Cabinets Plus	Feb 15 - Mar 15
Hardwood Floors	Mar 15 - Apr 15
Inserts	Apr 15 - May 15
Sprinkler System	May 15 - Jun 15
Electrical	Jun 15 - Jul 15

Shift all Dates for Schedule

Enter the Number of Working Days to Shift: (1 to 4000)

☐ Backward ☒ Forward

☒ 6 Symbols are Selected. Check this box if you wish to just shift the dates for the selected symbols.

☐ Reset Schedule Start and End Dates by the Same Amount

☐ Shift Curtain Dates by the same amount

☐ Shift ValueSet Dates by the same amount

NOTE: When selected symbols are shifted, all selected symbols are shifted, regardless of any lock to date settings. No dependent symbols are shifted.

OK Cancel

Autosave Improvements

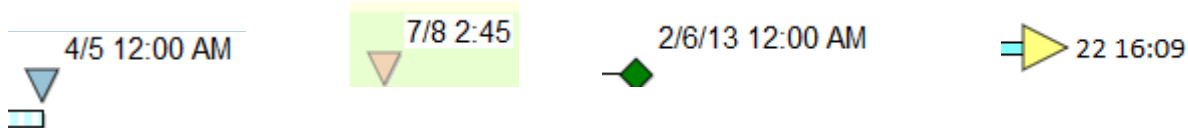
When a Milestones session exits it now only clear autosaves done by its own Process ID (PID), not any others whether they are running or not. This should prevent an autosave entry from disappearing without the user being able to restore it. This fixes the problem of multiple Milestones sessions running and deleting autosaved files from a crashed session before the user gets a chance at a restore.

The autosave Restore dialog now prompts the user to select an entry before OK is accepted. Before, if the user forgot to select an entry the autosave files were deleted.

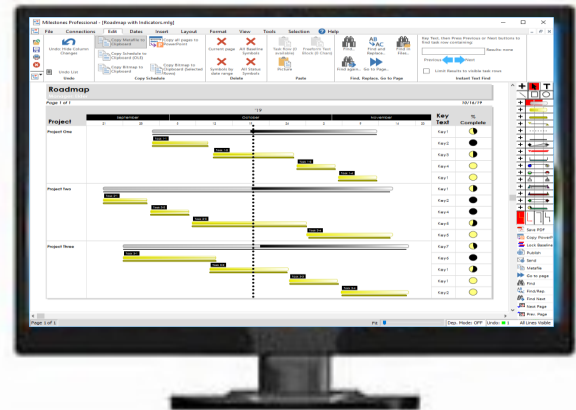
Also added, was a new button in the Tools | Program Options | Files and Automation screen which lets you display the current list of Autosaved files.

New Symbol Date Format

The Time of a symbol may now be appended to the displayed symbol date. Before, it was not possible to display both date and time in the symbol date display area. Show time using 12 hour or 24 hour formats. Optionally, choose to append "AM" and "PM."



Enhanced support for high resolution monitors



Milestones now automatically adjusts to operating on a high resolution monitor, sometimes referred to as a "4K" monitor. In the Apple world, these are referred to as "Retina" displays.

These high resolution monitors come in such resolutions as 3200x1600, 3840x2160 etc.

